

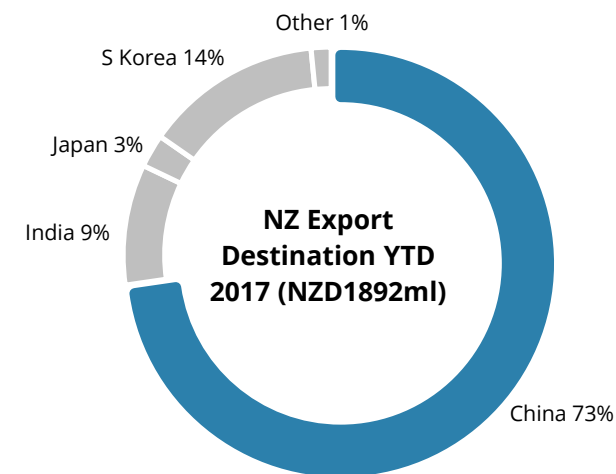
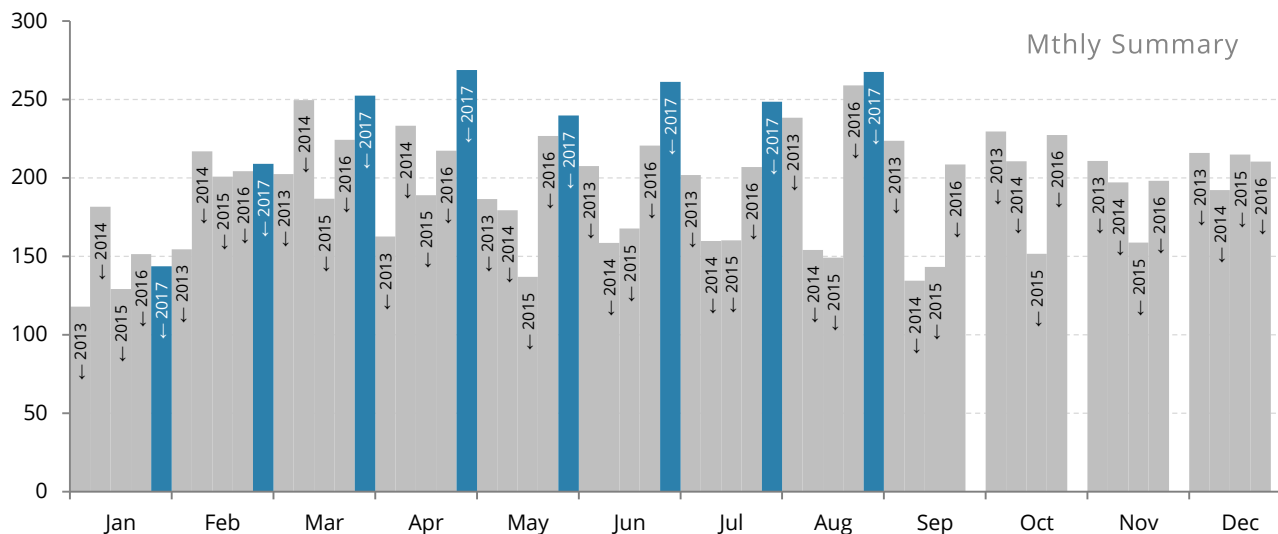


**CHAMPION**  
FREIGHT

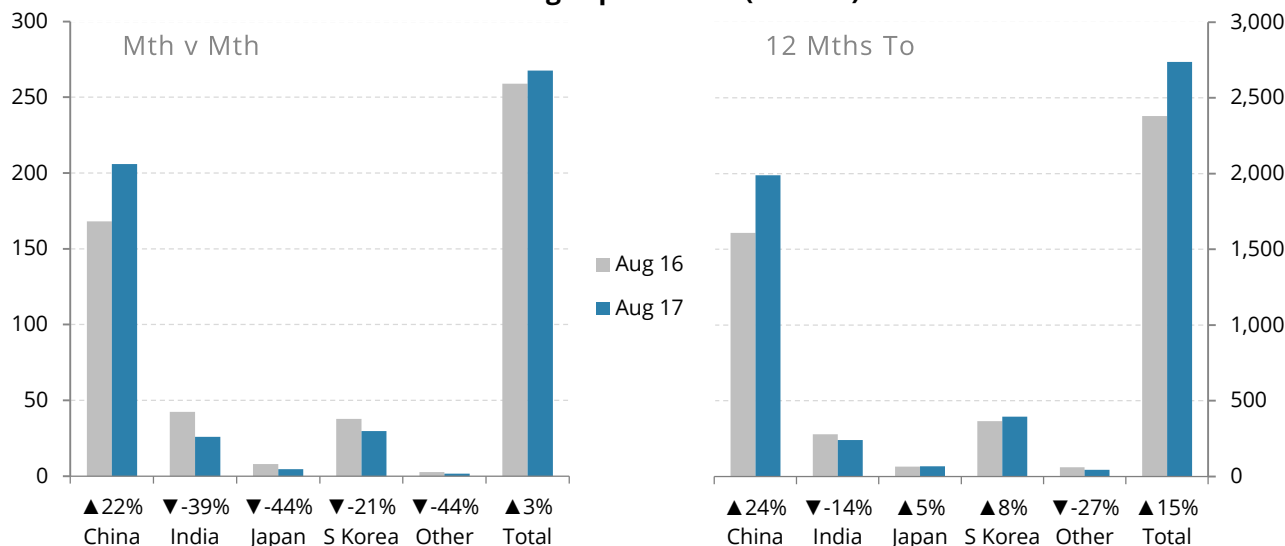
# NZ LOG EXPORT STATISTICS (HS 4403)

Reporting Month: Aug 2017

Published: 2 Oct 2017



## FOB Log Export Value (NZD ml)

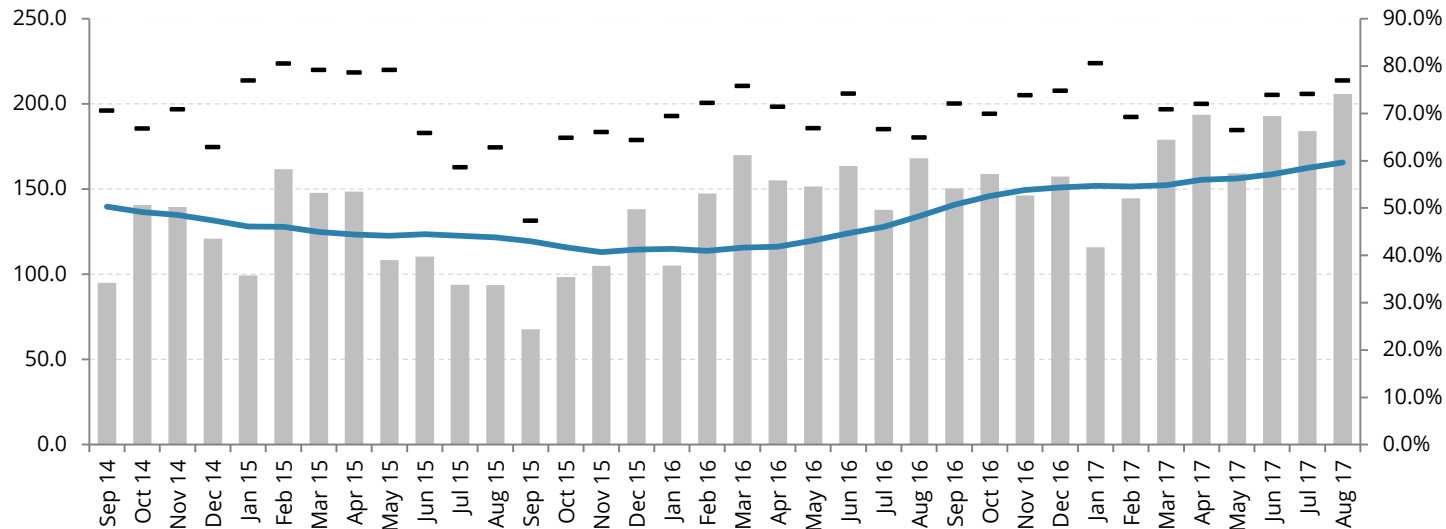


(NZD ml)	Month v Month			
Dest.	Aug 16	Aug 17	Difference	Δ%
China	168.1	205.9	37.8	22%
India	42.4	26.0	-16.4	-39%
Japan	8.0	4.5	-3.5	-44%
S Korea	37.8	29.7	-8.1	-21%
Other	2.8	1.6	-1.2	-44%
<b>Total</b>	<b>259.1</b>	<b>267.6</b>	<b>8.6</b>	<b>3%</b>

(NZD ml)	12 Months To			
Dest.	Aug 16	Aug 17	Difference	Δ%
China	1,608	1,988	380	24%
India	279	240	-39	-14%
Japan	65	68	3	5%
S Korea	366	396	30	8%
Other	62	45	-17	-27%
<b>Total</b>	<b>2,380</b>	<b>2,737</b>	<b>357</b>	<b>15%</b>

## China FOB Export Value

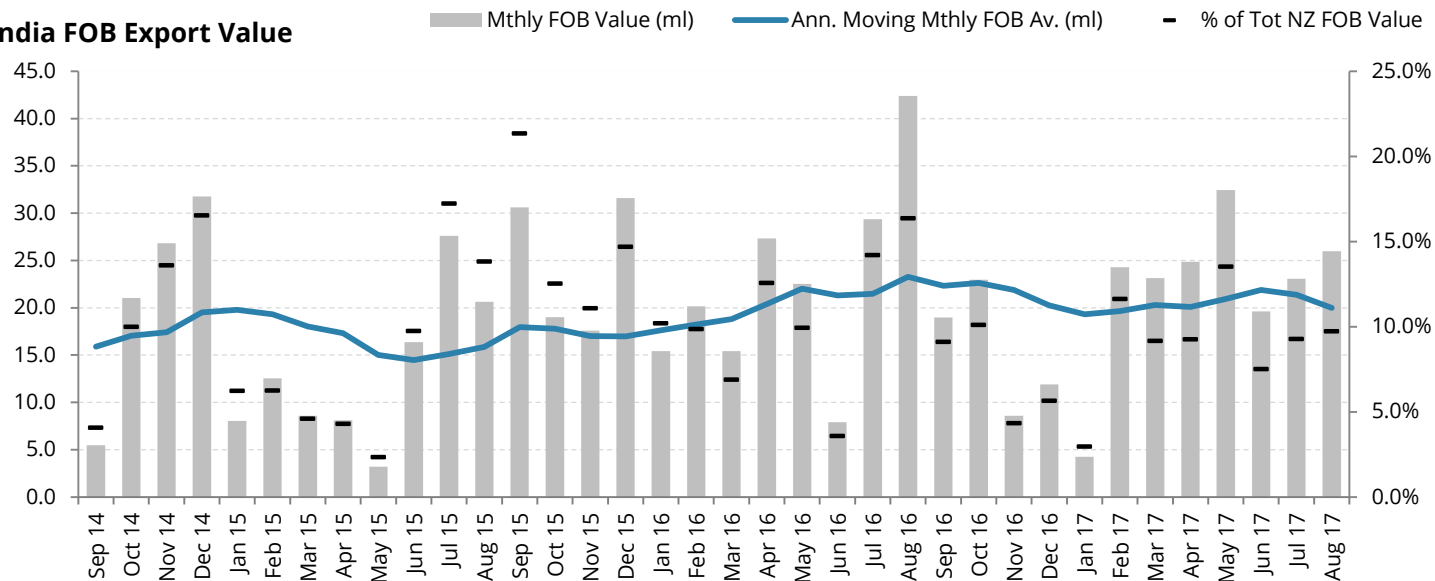


## NZ to China Export Figures

Period	Quantity (m <sup>3</sup> )	Av. FOB (NZD/m <sup>3</sup> )	NZD/CNY Qtr Av.
Q1 2015	2,959,622	138,146	4.62
Q2 2015	3,050,032	120,452	4.47
Q3 2015	1,991,831	128,240	4.08
Q4 2015	2,515,984	135,911	4.26
Q1 2016	2,813,016	150,346	4.34
Q2 2016	3,046,120	154,384	4.51
Q3 2016	3,143,630	142,435	4.81
Q4 2016	3,159,052	146,980	4.86
Q1 2017	2,810,548	154,595	4.90
P Q2 2017	3,480,266	157,667	4.84
Q3 2017	Pending release		

P - Preliminary Data

## India FOB Export Value

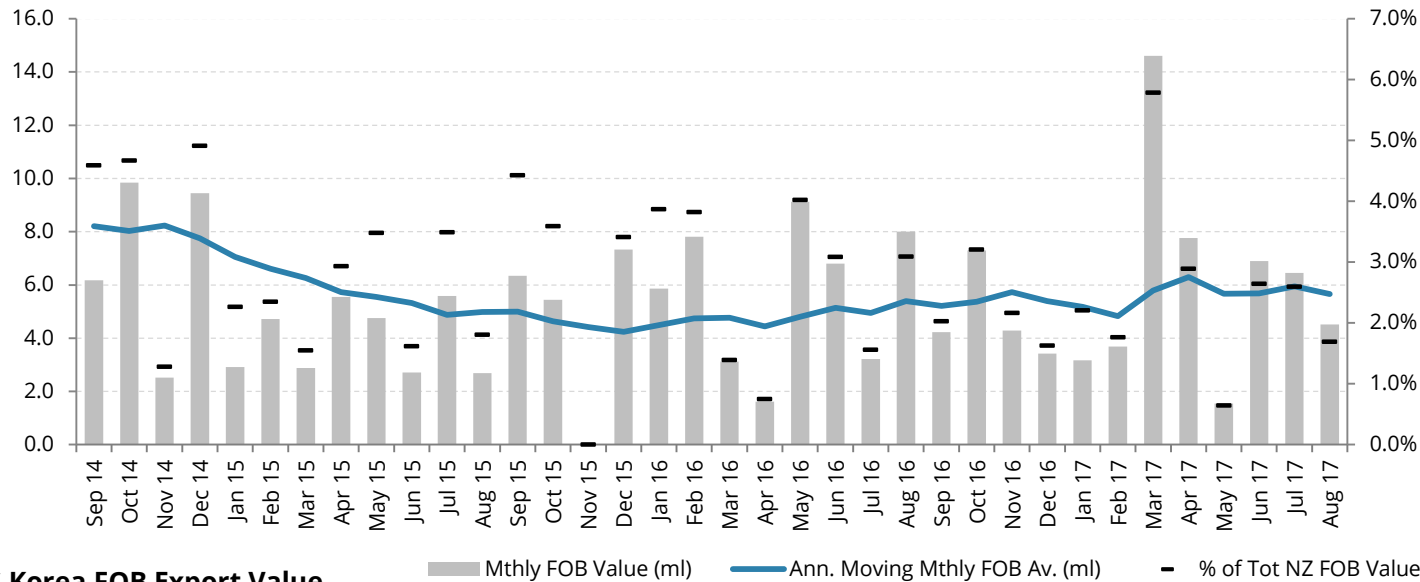


## NZ to India Export Figures

Period	Quantity (m <sup>3</sup> )	Av. FOB (NZD/m <sup>3</sup> )	NZD/INR Qtr Av.
Q1 2015	240,700	121,218	46.87
Q2 2015	263,060	105,095	46.44
Q3 2015	633,376	124,500	42.30
Q4 2015	480,315	141,943	43.92
Q1 2016	347,030	147,602	44.80
Q2 2016	400,116	144,314	46.14
Q3 2016	672,258	135,914	48.37
Q4 2016	301,898	142,708	47.99
Q1 2017	348,368	148,897	47.65
P Q2 2017	522,651	148,828	45.44
Q3 2017	Pending release		

P - Preliminary Data

## Japan FOB Export Value

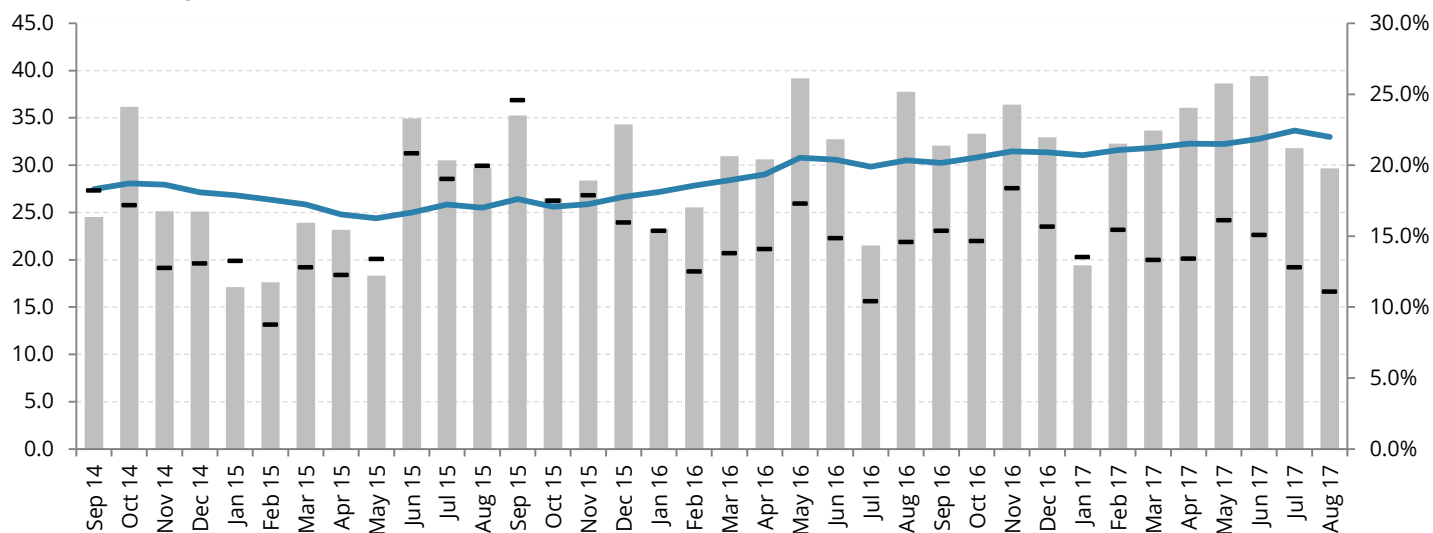


## NZ to Japan Export Figures

Period	Quantity (m <sup>3</sup> )	Av. FOB (NZD/m <sup>3</sup> )	NZD/JPY Qtr Av.
Q1 2015	77,585	135,609	89.70
Q2 2015	104,624	124,371	88.85
Q3 2015	118,011	123,910	79.66
Q4 2015	105,054	121,615	80.96
Q1 2016	109,917	152,717	76.60
Q2 2016	109,718	159,864	74.49
Q3 2016	127,406	150,931	73.92
Q4 2016	101,572	152,073	77.75
Q1 2017	153,552	163,385	80.80
P Q2 2017	105,375	166,932	78.37
Q3 2017	Pending release		

P - Preliminary Data

## S Korea FOB Export Value

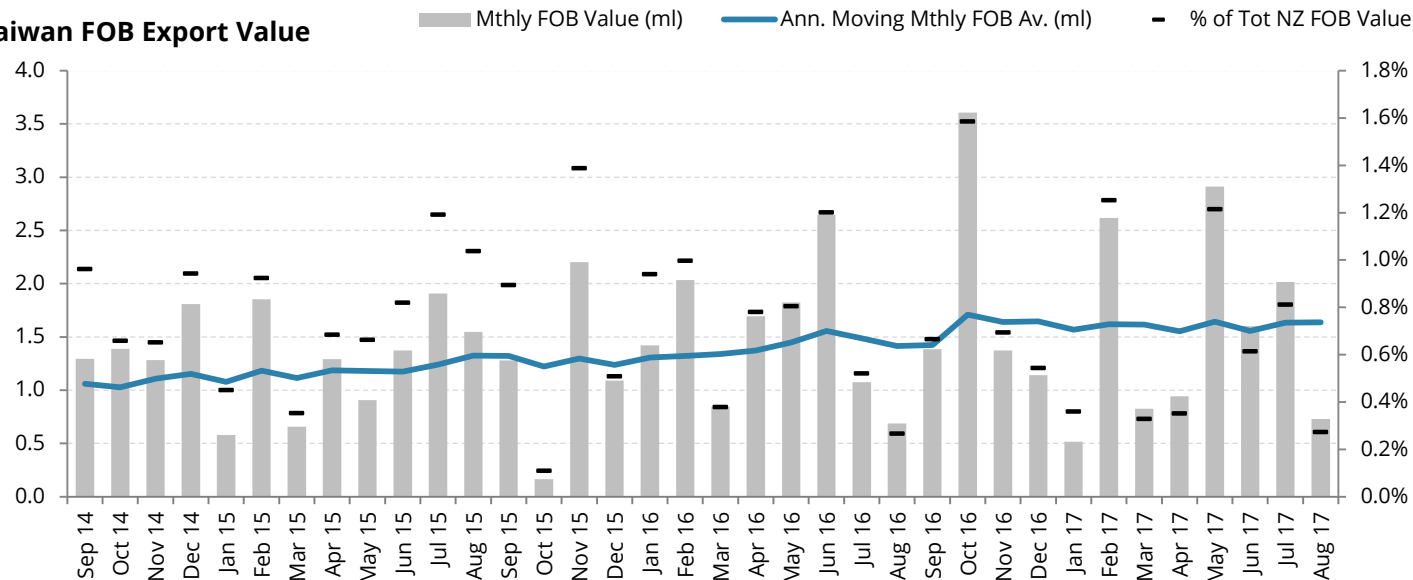


## NZ to S. Korea Export Figures

Period	Quantity (m <sup>3</sup> )	Av. FOB (NZD/m <sup>3</sup> )	NZD/KRW Qtr Av.
Q1 2015	433,748	135,145	828.9
Q2 2015	685,213	111,549	803.8
Q3 2015	813,451	117,417	762.2
Q4 2015	691,669	129,027	772.4
Q1 2016	578,081	137,463	797.2
Q2 2016	716,367	143,154	802.4
Q3 2016	690,724	132,871	809.3
Q4 2016	720,289	142,154	823.5
Q1 2017	604,491	147,100	819.2
P Q2 2017	757,292	149,379	796.2
Q3 2017	Pending release		

P - Preliminary Data

## Taiwan FOB Export Value



## NZ to Taiwan Export Figures

Period	Quantity (m <sup>3</sup> )	Av. FOB (NZD/m <sup>3</sup> )	NZD/TWD Qtr Av.
Q1 2015	18,158	170,195	23.77
Q2 2015	28,262	126,318	22.59
Q3 2015	28,498	166,160	20.86
Q4 2015	23,996	144,071	21.78
Q1 2016	27,189	160,517	21.99
Q2 2016	37,705	163,584	22.36
Q3 2016	22,597	139,327	22.91
Q4 2016	39,420	156,385	22.61
Q1 2017	24,410	159,742	22.10
Q2 2017	33,599	163,428	21.31
Q3 2017	Pending release		

P - Preliminary Data

## Log Export Vol. By Port (m<sup>3</sup>,000)

