

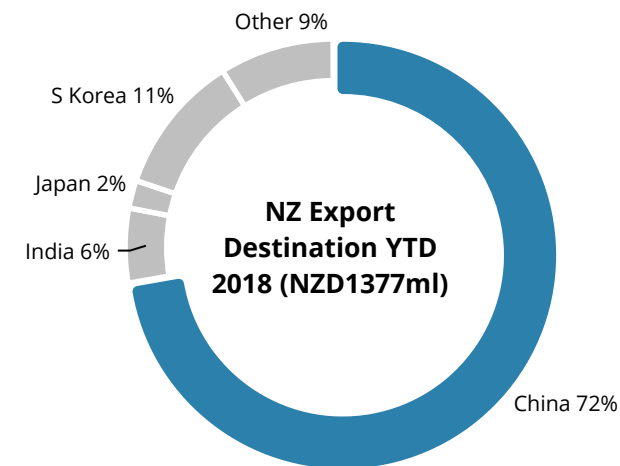
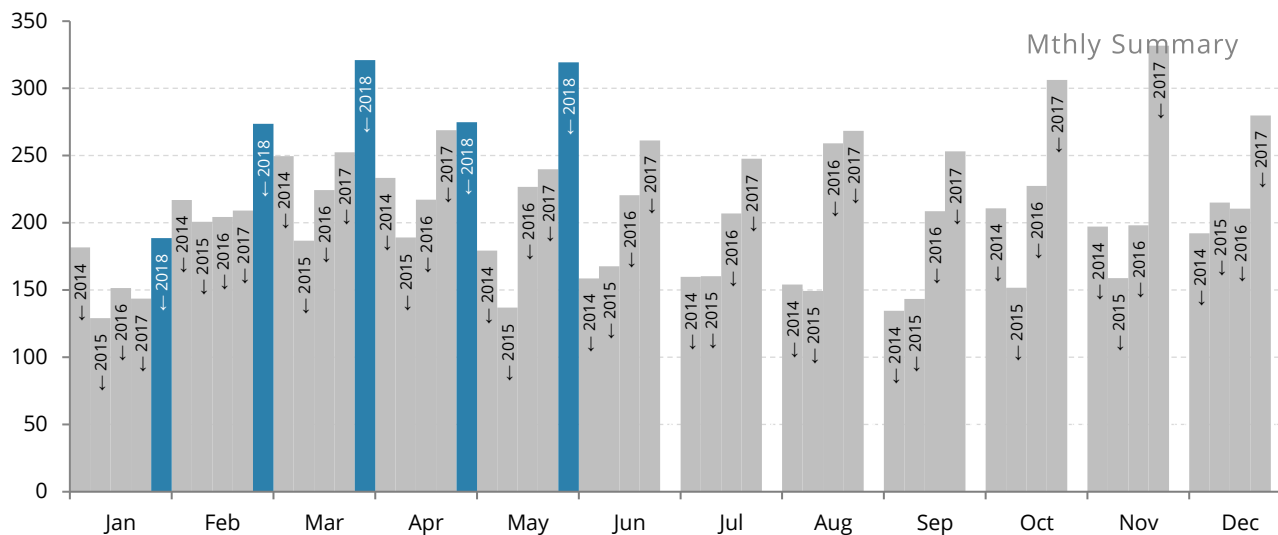


**CHAMPION**  
FREIGHT

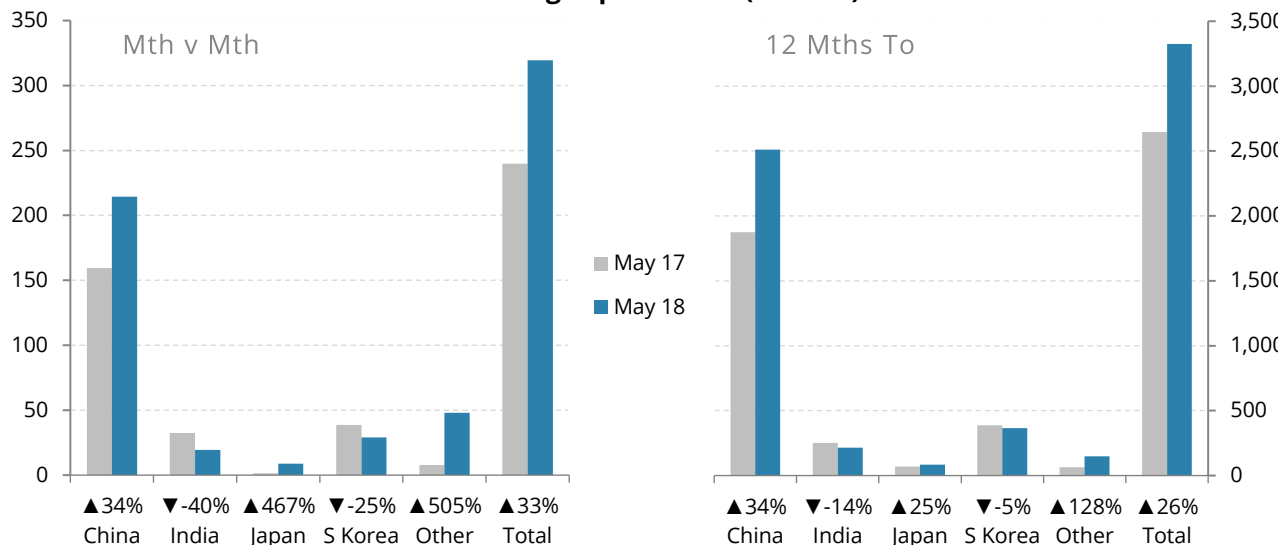
# NZ LOG EXPORT STATISTICS (HS 4403)

Reporting Month: May 2018

Published: 28 Jun 2018



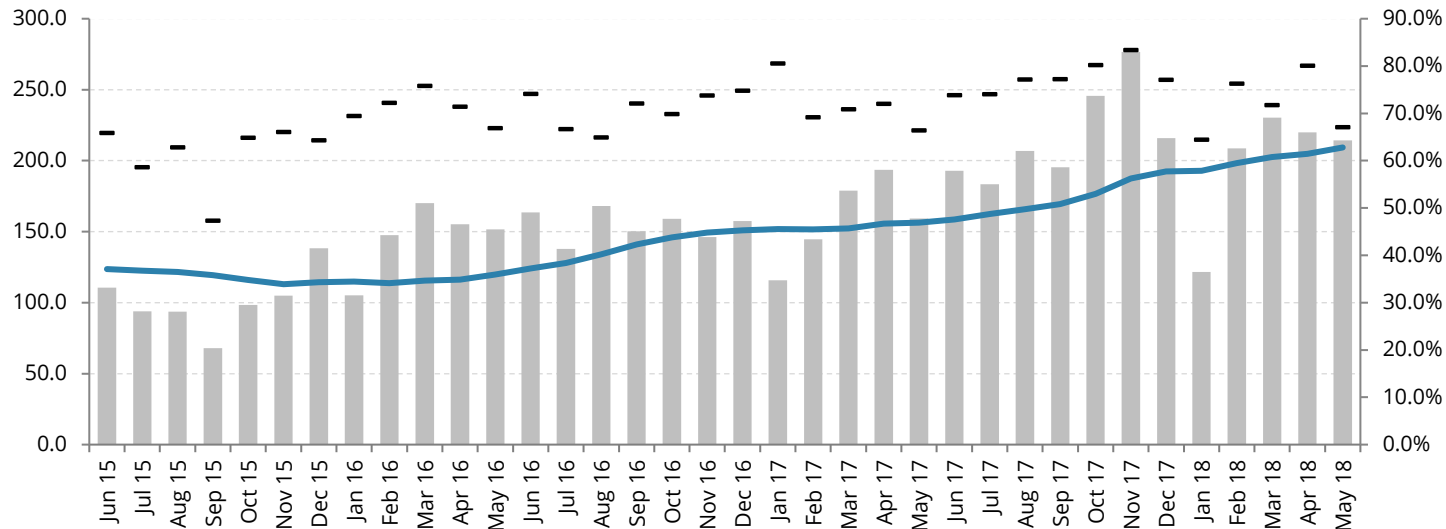
## FOB Log Export Value (NZD ml)



(NZD ml)	Month v Month			
Dest.	May 17	May 18	Difference	Δ%
China	159.3	214.3	55.0	34%
India	32.4	19.5	-13.0	-40%
Japan	1.5	8.7	7.2	467%
S Korea	38.6	29.0	-9.7	-25%
Other	7.9	48.0	40.0	505%
<b>Total</b>	<b>239.9</b>	<b>319.4</b>	<b>79.5</b>	<b>33%</b>

(NZD ml)	12 Months To			
Dest.	May 17	May 18	Difference	Δ%
China	1,875	2,512	637	34%
India	251	215	-36	-14%
Japan	68	85	17	25%
S Korea	387	366	-20	-5%
Other	65	148	83	128%
<b>Total</b>	<b>2,646</b>	<b>3,326</b>	<b>680</b>	<b>26%</b>

## China FOB Export Value

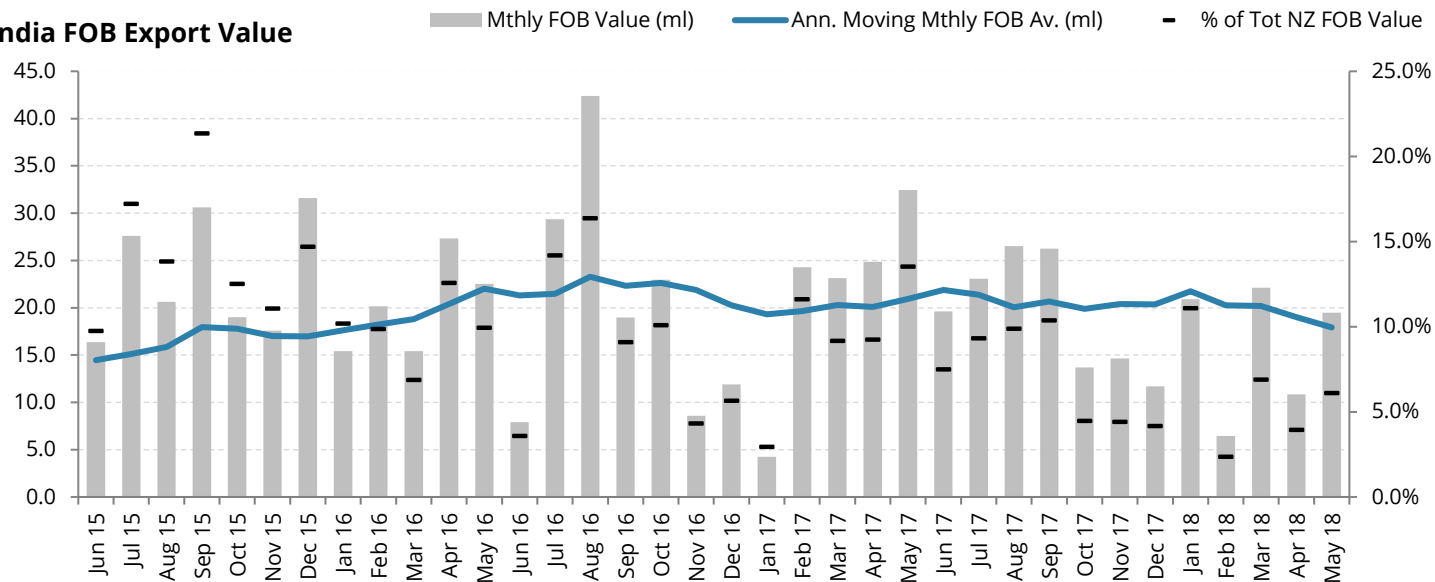


## NZ to China Export Figures

Period	Quantity (m <sup>3</sup> )	Average FOB (NZD/m <sup>3</sup> )	NZD/CNY Qtr Av.
Q4 2015	2,515,983	135,912	4.26
Q1 2016	2,813,016	150,346	4.34
Q2 2016	3,046,121	154,384	4.51
Q3 2016	3,221,767	141,719	4.81
Q4 2016	3,157,351	146,658	4.86
Q1 2017	2,840,478	154,664	4.90
Q2 2017	3,442,922	158,319	4.84
Q3 2017	3,677,604	158,368	4.87
Q4 2017	4,361,872	170,228	4.61
P Q1 2018	3,355,764	168,083	4.63
Q2 2018	Pending release		

P - Preliminary Data

## India FOB Export Value

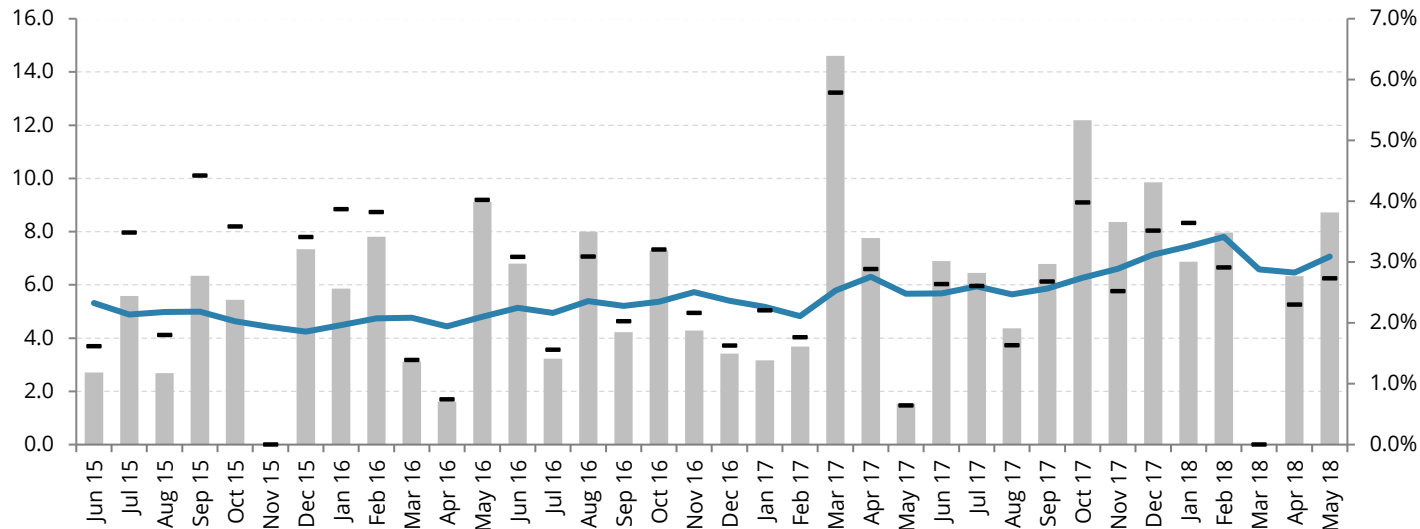


## NZ to India Export Figures

Period	Quantity (m <sup>3</sup> )	Average FOB (NZD/m <sup>3</sup> )	NZD/INR Qtr Av.
Q4 2015	480,314	141,943	43.92
Q1 2016	347,029	147,602	44.80
Q2 2016	400,116	144,314	46.14
Q3 2016	669,214	135,626	48.37
Q4 2016	305,471	143,287	47.99
Q1 2017	346,922	148,923	47.65
Q2 2017	517,289	148,244	45.44
Q3 2017	510,646	147,971	46.94
Q4 2017	250,873	160,506	45.13
P Q1 2018	317,721	155,709	46.80
Q2 2018	Pending release		

P - Preliminary Data

## Japan FOB Export Value

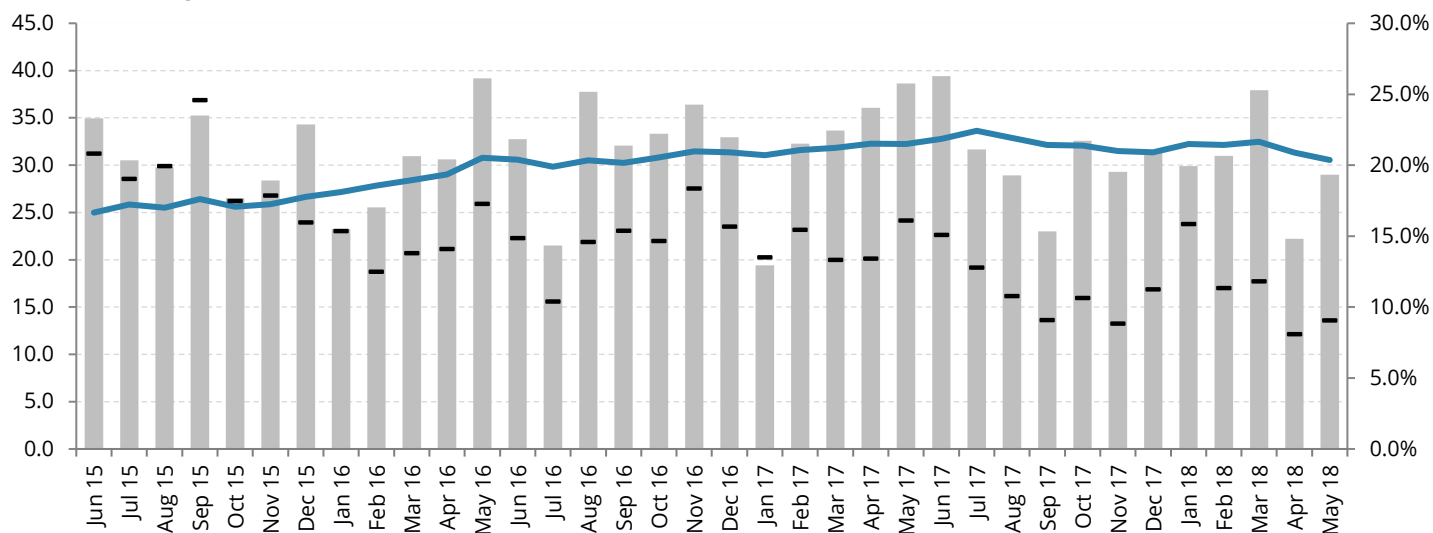


## NZ to Japan Export Figures

Period	Quantity (m <sup>3</sup> )	Av. FOB (NZD/m <sup>3</sup> )	NZD/JPY Qtr Av.
Q4 2015	105,054	121,615	80.96
Q1 2016	109,917	152,718	76.60
Q2 2016	109,718	159,865	74.49
Q3 2016	104,407	148,012	73.92
Q4 2016	99,196	151,255	77.75
Q1 2017	133,420	160,882	80.80
Q2 2017	97,969	165,374	78.37
Q3 2017	109,056	161,477	81.03
Q4 2017	170,049	179,344	78.65
P Q1 2018	91,611	162,524	78.78
Q2 2018	Pending release		

P - Preliminary Data

## S Korea FOB Export Value

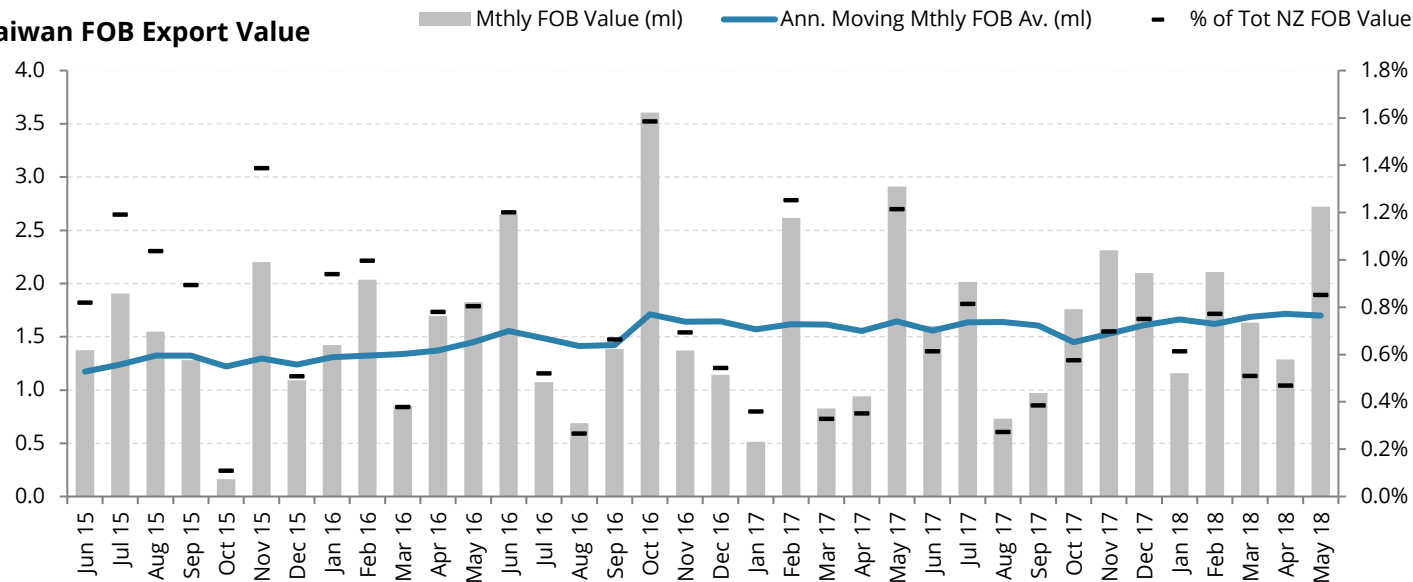


## NZ to S. Korea Export Figures

Period	Quantity (m <sup>3</sup> )	Av. FOB (NZD/m <sup>3</sup> )	NZD/KRW Qtr Av.
Q4 2015	691,669	129,027	772.4
Q1 2016	578,081	137,464	797.2
Q2 2016	716,366	143,154	802.4
Q3 2016	687,092	132,972	809.3
Q4 2016	720,586	142,240	823.5
Q1 2017	579,202	147,343	819.2
Q2 2017	762,522	149,420	796.2
Q3 2017	564,615	148,028	826.9
Q4 2017	595,431	156,787	772.6
P Q1 2018	621,145	158,707	779.9
Q2 2018	Pending release		

P - Preliminary Data

## Taiwan FOB Export Value



## NZ to Taiwan Export Figures

Period	Quantity (m <sup>3</sup> )	Av. FOB (NZD/m <sup>3</sup> )	NZD/TWD Qtr Av.
Q4 2015	23,996	144,070	21.78
Q1 2016	27,188	160,524	21.99
Q2 2016	37,705	163,583	22.36
Q3 2016	22,597	139,329	22.91
Q4 2016	39,220	156,066	22.61
Q1 2017	24,726	160,083	22.10
Q2 2017	33,446	163,105	21.31
Q3 2017	23,193	160,308	22.10
Q4 2017	36,454	169,311	20.99
P Q1 2018	30,322	162,394	21.32
Q2 2018	Pending release		

P - Preliminary Data

## Log Export Vol. By Port (m<sup>3</sup>,000)

